



DISABILITY FEDERATION OF IRELAND

# Disability Profile: Carlow<sup>1</sup>



23%

of the population of Carlow, or **14,333** people, have at least one disability.

Number of people in each age range with a disability



0-14	15-24	25-44	44-65	65+
1,314	1,514	2,992	4,197	4,316

## Disability by gender

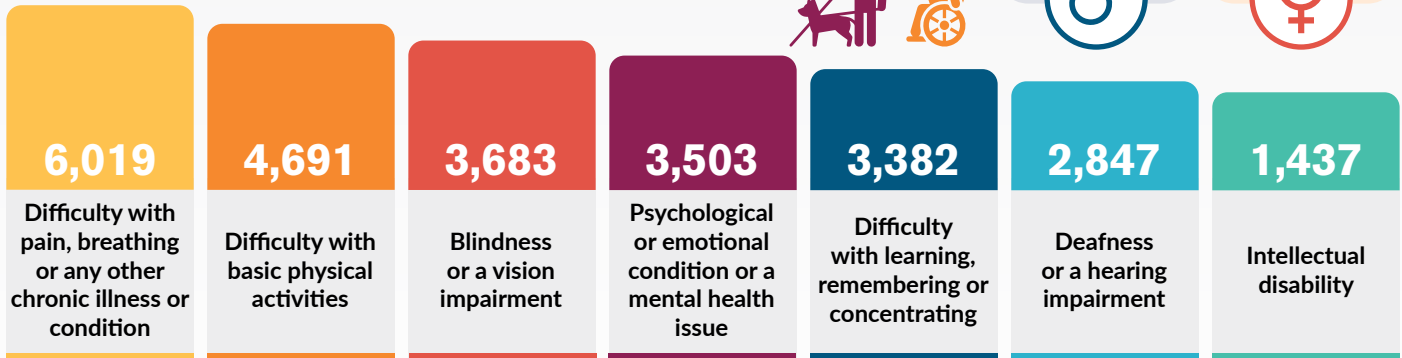
Male  
**6,896**



Female  
**7,437**



## Number of people with each type of disability



## Education level obtained<sup>2,3</sup>

No formal education

**4%**

have no formal education compared to 1.69% of the general population

Primary level

**14%**

did not progress beyond primary education compared to 7.14% of the general population.

Secondary

**33%**

had completed upper secondary compared to 28.04% of the general population.

Further education

**13%**

had completed further education compared to 13.02% of the general population.

Higher education

**21%**

had completed higher level education compared to 26.67% of the general population.

Still in education

**7%**

are still in education compared to 11.28% of the general population.



## Labour Participation<sup>4</sup>

32.32% People with disabilities over 15 are at work compared to 45.48% of the general population



## Social Housing<sup>5</sup>

17.35% People with disabilities are in social housing (by household) compared to 12.52% of the general population

- All statistics based on Census 2022, cso.ie
- Further education includes vocational/technical certificate and advanced certificate/completed apprenticeship, higher education includes Higher Certificate, Ordinary/Honours Bachelor, Postgraduate Diploma/Degree, and Doctorate. Data based on special tabulation from CSO.
- % of all adults, both ceased and not ceased their education. Adults who did not indicate whether they had ceased education are not shown.

- These numbers represent every individual over 15, including those in education, those over 65 and people retired.
- People aged 15 years and over, who were renting from a Local Authority or a Voluntary Body.

Due to changes in the census questions, the data from Census 2022 is not comparable to data from previous censuses



[www.disability-federation.ie](http://www.disability-federation.ie)