

The Neuro-Mapping Project – findings and potential applications



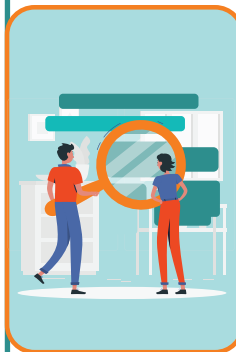
Background

Not enough specialist services

The status of community-based Neuro-Rehabilitation Services from the perspective of services users and service providers is a necessary preparation for the roll out of the Community Neuro-Rehabilitation Teams in 2025. To assist in the process, the joint HSE NAI and DFI Neuro-Mapping Project (Oct 23- Oct 24) engaged with 56 people with neurological conditions and 137 service providers in CHO 2,3 & 6, to establish the current challenges and suggestions to improve access to Neuro-Rehabilitation Services.

5 Key Findings

1. Not enough Specialist Community Neuro-Rehabilitation Services
2. Difficult to find out what services are available
3. Many obstacles to attending services resulting in inequity of access
4. Not enough long term supports and challenges of transitioning between services
5. Value of peer support network



5 Areas for Improvement

1. Increasing knowledge and information of services
2. Improving how services work together and sharing of information
3. Provide equitable access to services
4. Adequately staff and resource specialist services
5. Redesign and restructure services to facilitate continuum of care

Significance of Approach and Outputs for wider applications

- The unique approach for jointly engaging service user and service providers that can be replicated
- Gives direct testimony from service users and providers in relation to barriers and improvements
- Provides practical recommendations to inform the delivery of future community Neuro-Rehabilitation Services
- Provides a baseline on experience of access to community Neuro-Rehabilitation Services
- The report can be used as an advocacy tool for services for future planning
- Recommendations are embedded into the work plan of the National Neuro-Rehabilitation Steering Group and the Community Workstream.



Project Dissemination

A toolkit to support sharing the findings and outcomes of the project is available on the Neuro-Mapping Project is available on the DFI website <https://www.disability-federation.ie/our-work/neuro-mapping-project/>

Scan to see full report



The project was governed by the National Neuro-Rehabilitation Steering Group, and its recommendations will inform their workplan as well as that of the Community Workstream.

For updates contact Ciara Lynch Programme Manager, Neurorehabilitation Strategy and Managed Clinical Rehabilitation Network ciara.lynch6@hse.ie