

# What are the challenges of providing community Neuro-Rehabilitation Services?

## Service Provider insights



## Challenges

### Inadequate investment in the development of services

Frustration with the negative impact of under-staffed and under-resourced services.

### Transitioning between services

- The lack of knowledge of available services is a barrier to individuals accessing relevant and appropriate services.
- Services work in silos, with inefficient referral methods, and limited use of digitalisation

“Its such a complicated process to make a referral for somebody within the community. You could spend days shading a phone number to find out who to send the referral form to”



### Inequitable access to services

- Age and diagnosis criteria
- Limited accessible transport and
- Poor support networks

“ Accessing services to follow on can be challenging, and I suppose it depends on multiple factors in terms of where they're living, their age what services are available to them”

## Improvements Needed

### Increase knowledge on services available and improved liaison

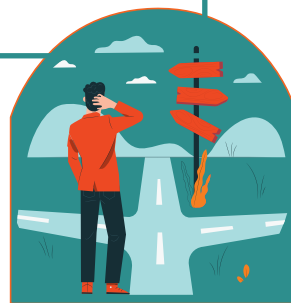
- **Service directory** to signposting and integration between services.
- **Care coordinator** or key worker to act as a contact point.

### More specialised staff

This will address the complexities of living with a neurological condition in the community across the life span

### Person centred systems

- Follow-up post discharge
- Easier re-entry options



### Long term goals

- Rehabilitation goals across the life span.
- Introduction of maintenance groups, tele-health rehab, local clinics

### \*Background information

The Neuro-Mapping Project (2024) aimed to further understand the current service and support pathways that occur between community services for those with neuro rehabilitative needs, to support integrated care in the community. 56 people with neurological conditions and 137 service providers across CHO 2,3 and 6 engaged with the project team. Summary and full report available by clicking QR code or <https://www.disability-federation.ie/our-work/neuro-mapping-project/>

### What's happening next

The HSE National Neuro-Rehabilitation Steering Group had oversight of the project and the recommendations will inform their workplan. For more information and updates contact [Ciara.lynch@hse.ie](mailto:Ciara.lynch@hse.ie); [mrogers@nai.ie](mailto:mrogers@nai.ie); [cathymcgrath@disability-federation.ie](mailto:cathymcgrath@disability-federation.ie)

Scan to see full report

